

Eclipse Zone 8

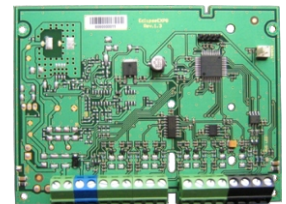
Zone expander

● Description

Eclipse ZONE 8 is an expander for adding 8 additional zone inputs to ECLIPSE 32 system configuration. The added zones are fully programmable from the control panel. The power supply is from the panel.
The expander module can be mounted in the control panel box (under the main PCB) or can be installed in a universal small plastic box.

● Technical Specifications

Power Supply from the control panel . . . 9-18V (nom. 14V)
Consumption Max. 100mA@12VDC
Zone Inputs 8
PGM Output 1
Indication type LED
Operation temperature -20 ÷ +50°C



● Functional Specifications

- Connection directly to the system bus;
- 8 additional zone inputs with freely programmable parameters;
- Additional terminal +/- AUX for power supply for detectors with consumption up to 0.75A;
- Additional +PGM output for power supply of auxiliary devices with consumption up to 0.75A;
- Additional PGM output, 100mA, OC type (open collector)

● Packing Information

- **Master box** - 45 units Zone 8, dimensions 496 x 305 x 206 mm

● Compatible Product Range

- **Eclipse 32** - Alarm Control Panel

● Contact Information